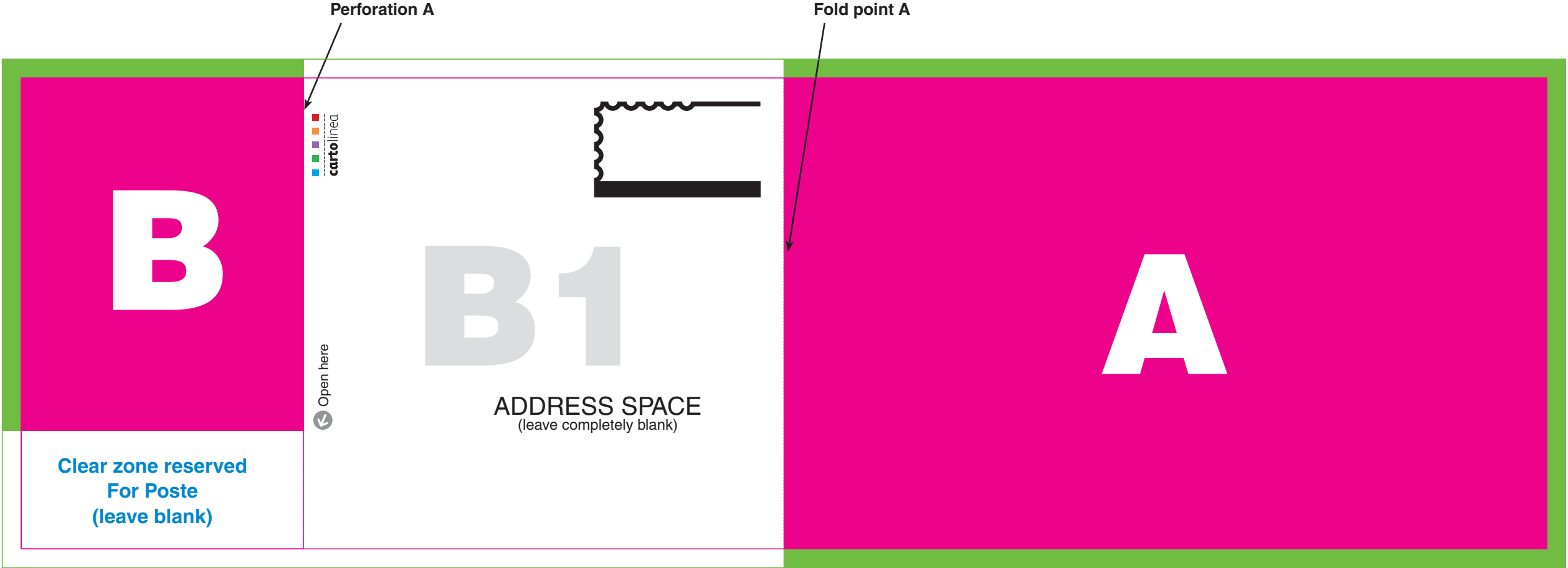


In this PDF it is showed the graphical distribution respecting the reserved spaces (glues, perforations, address space) and the real measurement of the product with relative cut edges and bleed



- SPACE FOR GRAPHICS
- SPACE FOR PRINTING BLEED
- SPACE FOR GLUE

- During the setting up, the two yellow spaces (Glue) match and keep Cartoplus definitively and permanently closed
- When used by the end user, the fold **B1** will open tearing the **perforation A** placed on the **right of the fold B**. It will turn around the fold **point A** opening on the right or will be removed itself because the fold point is perforated. Therefore it will show the graphical space **D** on the rear and the graphical space **C** will remain fixed on Cartoplus with the small fold **B** (fixed) on the left

